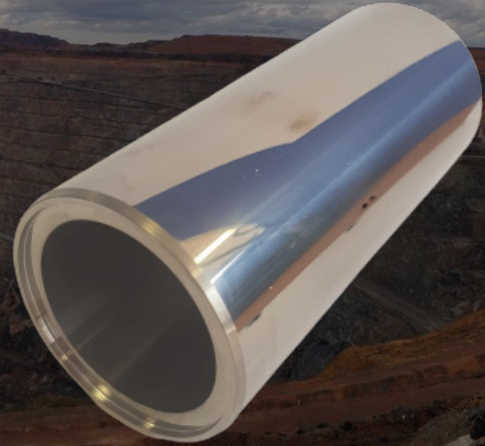


Corrosion resistant shaft sleeves.
Designed to last in the harshest of mining applications.



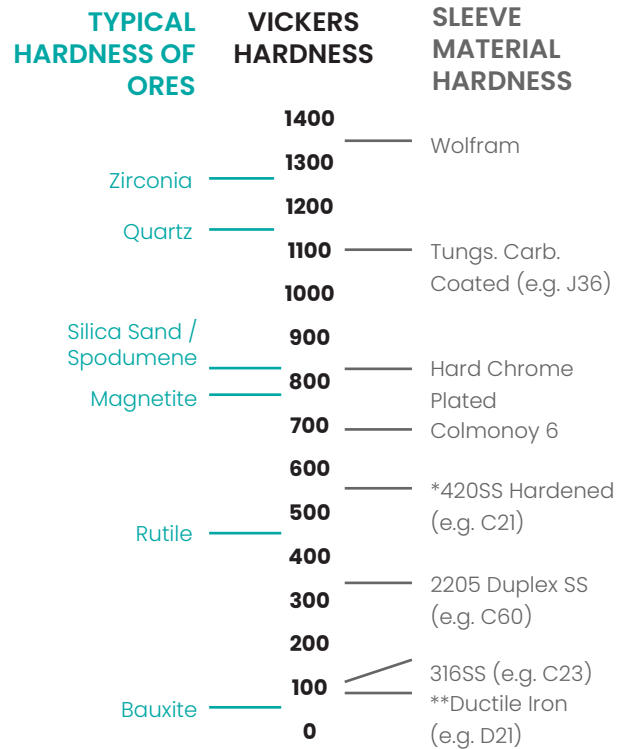
Safer-Series Wolfram shaft sleeves are designed for arduous mining applications and provide a dramatically longer wear life than other sleeve materials.

We guarantee three times the wear life of competitor D21, C21, C23, and C26 sleeve materials with over 10 times reported in several field trials.

Features:

- Hardness of 1300 Vickers,
- Mirror surface finish, and
- Highly corrosion resistant materials.

Custom designs are available enabling our Wolfram sleeves to provide solutions in all brands of pumps.



*W-W standard sleeve outside Africa.
 **W-W standard sleeve in Africa.

TECHNICAL SPECIFICATION	
SLEEVE DIAMETERS	To 130mm (5.125") (refer to factory for larger)
SLEEVE LENGTHS	As required
HARDNESS	1300 Vickers
'O' RING GROOVES	1300 Vickers (i.e. sleeve ends not soft like coated sleeves)
SURFACE FINISH	Polish ground to <Ra 0.2 (mirror)
TEMPERATURE RATING	-30°C to + 1000°C as standard
MATERIAL SPECIFICATION	
SOLID WOLFRAM	Proprietary material

STOCK SELECTION FOR RAPID DELIVERY	
SUITS FRAMES	B, C, CAM, D, DAM, E, EAM, F
SHORT SLEEVES	Upgrades basic part nos. '075'
LONG SLEEVES	Upgrades basic part nos. '076'
ALTERNATIVE BRANDS	Manufactured to order

Standard selection chart for commonly requested sleeves

SAFER-SERIES P/NO	UPGRADES	OUTSIDE DIA (MM)	INSIDE DIA (MM)	LENGTH (MM)	PUMP MODEL(S) AND SIZE(S)
SHORT SLEEVES - PACKED GLAND (NORMAL STOCK HOLDINGS)					
075.B.WF01	B075*	45	35	66	Suits numerous Legacy Models
075.C.WF01	C075*	59	48	79	
075.D.WF01	D075*	83	70	95	
075.E.WF01	E075*	101	86	119	
075.F.WF01	F075*	130	112	145	
LONG SLEEVES TO UPGRADE LEGACY SERIES - PACKED GLAND (NORMAL STOCK HOLDINGS)					
076.B.WF01	B076*	45	22	90	1.5/1BAH & 2/1.5 BAH
076.C.WF01	C076*	59	34	106	3/2 CAH, CCAH & PAH
076.CAM.WF01	CAM076*	59	45	132	4/3 CAH, CCAH, PQAHA
076.D.WF01	D076*	83	48	130	4/3 DAH, DDAH & QAHA
076.DAM.WF01	DAM076*	83	64	150	6/4 DAH, DDAH, QRAHA
076.E.WF01	E076*	101	60	162	6/4 EAH, EEAH, RAHA
076.EAM.WF01	EAM076*	101	76	184	8/6 EAH, EEAH and 8/6 RSAH
076.F.WF01	F076*	130	78	198	8/6 FAH
*UPGRADES COMPETITOR MATERIAL CODES INCLUDING BUT NOT LIMITED TO:					
D21 (Ductile Iron), C21 (420C Hardened SS), C23 (316SS, C60 (2205 Duplex SS), J31 (88% Tungsten Carbide, 12% Cobalt Binder Coated 420SS), J36 (Tungsten Carbide Coated 2205)					
WOLFRAM SLEEVES CAN ALSO BE MANUFACTURED TO SUIT OTHER BRANDS INCLUDING					
KSB-GIW®, Metso®, Svelta®, Allis Chambers®, ITT Goulds®, Millmax® Flowserve® and more					

FEATURE / SLEEVE MATERIAL	SOLID WOLFRAM (MACRO HARDNESS)	WC COATED (MACRO HARDNESS)	CHROME COATED	COLMONOY 6	HARDENED 420SS	2205SS	DUCTILE IRON	316SS
GENERIC MATERIAL CODE	WF01	J36			C21	C60	D21	C23
VICKERS HARDNESS	1300	1100	840	700	575	290	165	160
ABLE TO REDUCE WATER FLUSH RATE	✓	x	x	x	x	x	x	x
SUITABLE STRONG ACIDS	✓	x	x	x	x	✓	x	x
SUITABLE STRONG ALKALIS	✓	✓	✓	x	x	✓	x	✓
PH RANGE	1 to 14	4 to 14	3 to 14	6 to 10	4 to 12	1 to 14	6 to 10	3 to 14
SUITABLE LIP SEALS	✓	x	✓	✓	✓	✓	✓	✓
SUITABLE KEVLAR PACKING	✓	✓	x	x	x	x	x	x
ASSEMBLE WITH HAMMER	x	x	x	x	x	x	x	x

Find out more at saferpumps.com or email info@saferpumps.com for a quote.

